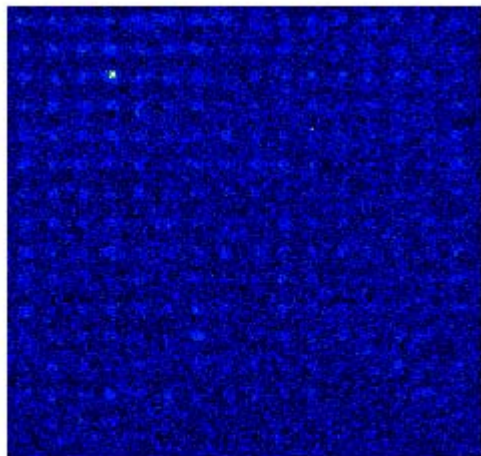


Supplementary Information for "Rapid Analysis of the DNA Binding Specificities of Transcription Factors with DNA Microarrays"

Supplementary Figure 2

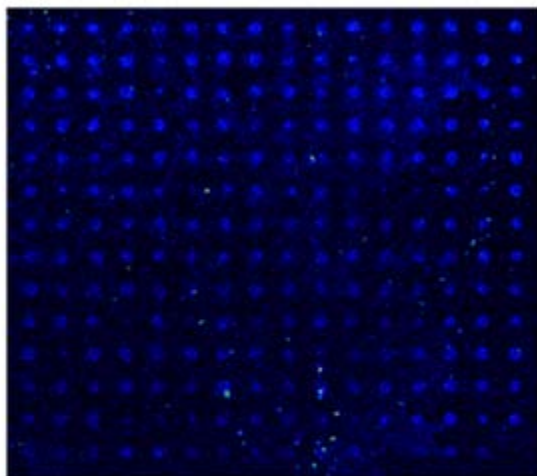
PBM Negative Control Microarrays - scanned at very high laser power settings

(a) rGST (Sigma)



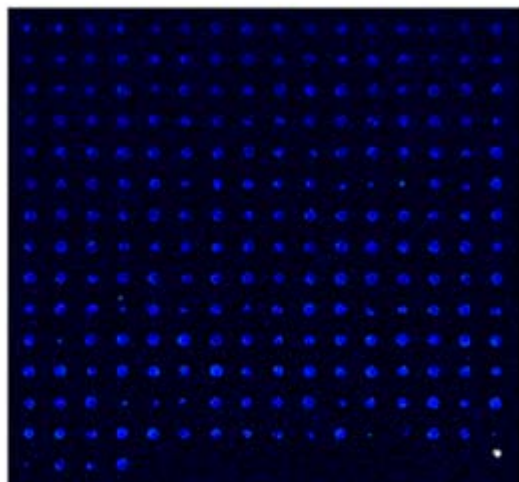
(a)

(b) GST-His6 (purified from yeast)



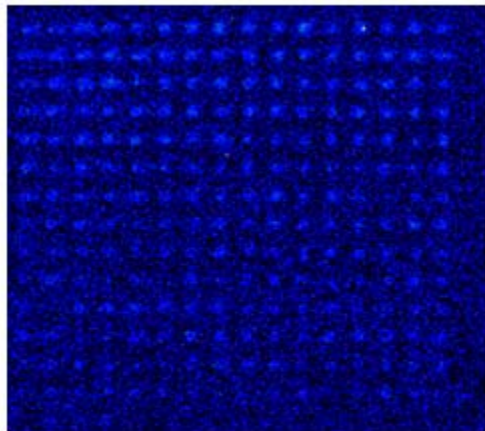
(b)

(c) GST-His6-Cmd1 (purified from yeast; Cmd1 is calmodulin)



(c)

(d) no added protein in protein binding reaction ("milk only")



(d)